

2021

NEW EDITION PART 1

OUTDOOR LIGHTING



WALL LIGHT • GARDEN SPIKE • FLOOD LIGHT



Manufacturer • Buying Agent • Inspection Agent



Home Resource Ind. Co., Ltd.

Taipei Headquarter:

4F No. 69-A, Sec. 2, Chung Cheng East Rd., Tamahu Dist., New Taipei City, Taiwan
China Factory:

No. 8, Yanjiang W. 1st Rd., Keji Ave., Torch Development Zone, Zhongshan City, Guangdong, China

Tel: 886-2-2809-1212 (Rep. 12 Lines)

Fax: 886-2-2808-1565

E-mail: hr@homeresource.com.tw

<http://www.homeresource.com.tw>



ISO 9001



Home Resource Ind. Co., Ltd.

Home Resource LEDS The World





HOME RESOURCE HISTORY TIMELINES

- 1980 Established Home Resource Ind. Co., Ltd. in Taiwan
- 1982 Established Home Resource in Shanghai
- 1995
 - HR being the 1st Taiwanese company in receipt of SEMKO, NEMKO, and DEMKO Certificates
 - Established Home Resource in Shunde for Inspection, Sourcing, Consolidation to customer service
- 1996 Received Excellent Quality Award, Spain
- 1997 Established Home Resource Golf Team
- 1998 Established Charitable Memorial Foundation of caring for the elderly
- 1999
 - Established Home Resource in Qinal, Dongguan (Guangdong)
 - Awarded the ISO 9001:2000 certification
- 2003
 - Awarded from TUVPS as one of the TOP 5 Golden Clients in Asia
 - Founded the scholarships in Longang Elementary School in Taichung City, Taiwan
- 2004 President Sam Chen was being the Chairman of Taiwan Lighting Association (2004-2007)
- 2005
 - Received National Quality Award in Taiwan
 - Moving from Shanghai to Ningbo - The first Taiwanese lighting company in Ningbo
- 2006 Acquired 26,000 square meters land in Zhongshan City, Guangdong
- 2007 Awarded as one of the best "ISO 9001:2000" companies listed as members of KEMA organization
- 2008
 - Red Dot Design Award, Germany
 - Good Design Product, Taiwan
- 2010
 - Established New Factory in Zhongshan (Guangdong)
 - Established the Research & Development Center
- 2013 Awarded the BSCI certification
- 2015 Received National Excellent Lighting Quality Award in Japan
- 2017 Received The Best Innovation Award of Taiwan Lighting Association





OUR VISION

To illuminate Every Part of the World

OUR MISSION

- To be the leading lighting company in Taiwan and China
- To be the best at what customers value most
- To exceed customers expectation
- Treat staffs & customers & substructures as partnership
- Enjoy work as part of life
- To be a respected company

OUR CORE COMPETENCE

- Integrity
- Innovation
- Profession
- Passion
- Efficiency
- Responsibility
- Teamwork



China Factory - 26,000m² (Zhongshan City, Guangdong Province)

Home Resource's products are designed and manufactured by its own factory (Green Resource) Sited in Zhongshan, China.





PRESIDENT'S MESSAGE

Sam Chen Ph.D

- Chairman of TLFEA (2004-2007)
TLFEA: Taiwan Lighting Fixture Export Association
- Director of CEECA and LABC
CEECA: The Central, Eastern Europe and CIS Association
LABC: Latin American Business Council
- Vice Chairman of Taiwan Investors Association in Zhongshan
-  Rotary Member

Since its establishment in 1988, Home Resource Ind. Co., Ltd. has been dedicated to production and development of lighting products for three decades.

We would like to take this opportunity to express our sincere appreciation for your fully supports and concerns over the past 31 years.

With years of efforts on upgrading production capability and capacity, Home Resource has grown into a consummate manufacturer of lightings on OEM and ODM basis. Globally reputed R&D talent has also helped Home Resource to enhance popularity and recognition of its own-brand products in recent years.

In addition to existing branches, Home Resource has opened a constructed plant of 26,000 square meters in China (Zhongshan City, Guangdong Province), which employs advanced production equipment to assure even shorter delivery and more considerate services for clients than before.

We strive for success not only in having determination and courage, but also developing innovative products and marketing intelligence base on our core competence: innovation, efficiency, integrity and passion. Home Resource will definitely get hold of past success to carry on growing continuously in the lighting territory now and then. Let's witness the brand new, prosperous Home Resource to achieve an even higher peak of success in the coming future.

David Chen General Manager




Home Resource was established in 1988. Since then, the company has developed into one of the most professional lighting manufactures in Taiwan and Mainland China.

Home Resource/Green Resource would like to express our sincere thanks to all customers, parts sub-contractors and every one of our employees. It is their continuing support and hard work that has allowed Home Resource / Green Resource to grow as rapidly as they have been able to. HR & GR will continue to make even greater efforts in the future.

Other than a self-support manufacturer, through a presence in Ningbo and Zhongshan and 50 employees, Home Resource also operates a sourcing network of two offices in China.

We strive to attain a position of long-term, sustainable pre-eminence in the lighting field "lighting up" both our customers and ourselves.

We look forward to working with you all continuously to create a brilliant future.

 中山华睿照明有限公司
HOME RESOURCE IND. CO., LTD. (Zhongshan)
GREEN RESOURCE ILLUMINATION CO., LTD.

HOME RESOURCE

HAS RECEIVED THE FOLLOWING AWARDS:

Design Awards:



- Good Design Product of Taiwan



- Reddot Award of Germany



L: Sam Chen
(President of Home Resource)
R: Alfred Albrecht, TÜVPS
(GTS Testing & Certification)

- Awarded from TÜVPS as one of the Top 5 Golden Clients in Asia (2003)



L: Sam Chen
(President of Home Resource)
R: P. K. Chiang
(Minister of Economic Department, Taiwan)
• Being as Chairman of
Taiwan Lighting Association (2004)



L: Jack Chen
(Former President of HR & GR)
R: Representative of Senior Group

- Awarded from Senior Group
towards annual charity donation



David Chen
(General Manager of Home Resource)
• Received Innovation Award for
Mushroom Lamp in 2008 Frankfurt
Light + Building Exhibition.

Safety Approval:

CE, GS, CUL, ETL



GS Certificate

CUL, ETL Certificate

More than 60 patents:



INDEX

EXTERIOR LIGHT

•Wall Light, Path Light	01-43
•Recessed Wall Light	44-45
•Lantern	46-60
•Garden Light	61-76
•Party Light	77-79
•Flood Light	80-88
•Work Light	89
•Bulkhead	90-95
•Security Light	96-99
•Work Light, High Bay, Garden Socket	100-105

**WALL LIGHT
PATH LIGHT
LANTERN**

NEW
Products

LED CURVE **WALL** LAMP



Delivered Lumens: 980
Watts: 12W
Voltage: 100-240V
Beam Angle: 110.9°
Mounting Options: Wall
CCT: 3000K
CRI: 80+
IP65



● ELED-643

2 IN 1 ADJUSTABLE LED **WALL** LAMP

NEW
Products



Delivered Lumens: 400
Watts: 11W
Voltage: 100-240V
Beam Angle: 217°
Mounting Options: Wall
CCT: 3000K
CRI: 80+
IP65



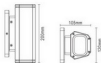
● ELED-645

NEW
Products

MODERN UP & DOWN LED WALL LAMP



Delivered Lumens: 680
Watts: 11W
Voltage: 100-240V
Beam Angle: 268°
Mounting Options: Wall
CCT: 3000K
CRI: 80+
IP65



● ELED-646B

NEW
Products

LED SPIN WALL LIGHT



Delivered Lumens: 600
Watts: 10W
Voltage: 120V/100-240V
Mounting Options: Wall
CCT: 3000K
CRI: 80+
IP65



● ELED-644

NEW
Products

LED BOX **WALL** LAMP



Delivered Lumens: 800
Watts: 13W
Voltage: 120V/100-240V
Mounting Options: Wall
CCT: 3000K
CRI: 80+
IP65



● ELED-506



● ELED-506S



NEW
Products

LED COVER **WALL** LIGHT



Delivered Lumens: 500
Watts: 13W
Voltage: 120V/100-240V
Mounting Options: Wall
CCT: 3000K
CRI: 80+
IP65



● ELED-642



NEW
Products

LED **PLASTIC** LANTERN



Material: PP Housing + PC Diffuser
Voltage: 110-240V
Mounting Options: Wall
Bulb: Max. 15W Max. 60W (excl.)
IP44



● EL-P251UP



● EL-P466DN



● EL-P458UP

LED **PLASTIC** LANTERN

NEW
Products



Material: PP Housing + PC Diffuser
Voltage: 110-240V
Mounting Options: Wall
Bulb: Max. 15W Max. 60W (excl.)
IP44



● EL-P455DN



● EL-P456DN

HOT
Selling



WALL/CORNER FIXING 2-IN-1 LAMP

Material: PC
Lamp: 12W(14pcs SMD2835 4000K LED)
Lumen: 950LM
Color: White/Black
With Detachable Corner Bracket
Ra: 80
IP44



Corner Installation



Wall Installation



Detachable

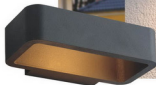
Corner Bracket

- ELED-083DN (Basic)
- ELED-083DN-PH (Photocell)
- ELED-083DNS (PIR Sensor)



LED EXTERIOR WALL LIGHT

HOT
Selling



• ELED-634A



• ELED-634B

Material: Die-cast Aluminum
Input Voltage: 220-240V/50-60Hz
Lamp: 1 x 6W CREE LED
Color: black
IP54

HOT
Selling



LED EXTERIOR WALL LAMP



Material: Aluminum + Glass
Voltage: 110V-240V
SMD MAX: 12W
Lumen: 555LM
Color: Black
IP54



• ELED-501

HOT
Selling

LED EXTERIOR WALL LIGHT



Material: Aluminum + Glass
Voltage: 110V-240V
Lamp: 9.7W(60PCS x SMD2835 LED)
Lumen: 322LM
Color: White
IP44



• ELED-502

HOT
Selling

LED EXTERIOR **WALL** LIGHT



Material: Die-cast Aluminum + Acrylic
Input Voltage: 220-240V/50-60Hz
Lamp: 8W(48pcs x SMD LED)
Color: black
IP54



● ELED-632-2

HOT
Selling

LED EXTERIOR **WALL** LIGHT



Material: Die-cast Aluminum + PC
Input Voltage: 220-240V/50-60Hz
Lamp: 12W(2pcs COB LED)
Color: black
IP54



● ELED-635

HOT
Selling

LED EXTERIOR ROTATABLE WALL LIGHT



Material: Die-cast Aluminum + PC
Input Voltage: 220-240V/50-60Hz
Color: black
IP54



• ELED-630-2
Lamp: 12W/30cm x 80W/200



• ELED-630
Lamp: 8W/20cm x 80W/200

HOT
Selling

LED EXTERIOR ROTATABLE WALL LIGHT



Material: Die-cast Aluminum + Acrylic
Input Voltage: 220-240V/50-60Hz
Color: black
IP54



• ELED-631
Lamp: 6W/20cm x 80W/200



• ELED-631-2
Lamp: 12W/30cm x 80W/200



HOT
Selling

LED EXTERIOR ADJUSTABLE **WALL** LAMP



● ELED-058

Material: Aluminum-Die Cast + PC
Lamp: 12.5W(36pcs x SMD 2835 LED)
Lumen: 1067LM
Voltage: 220-240V
Color: Black
With Built-in Driver
IP54

HOT
Selling

LED EXTERIOR **WALL** LIGHT



Material: Aluminum-Die Cast+ PC
Lamp: 12W(60pcs x SMD 2835 LED)
Lumen: 830LM
Voltage: 110V-240V
Color: Black
IP44



● ELED-060



HOT
Selling



Material: Aluminum-Die Cast + PC
Lamp: SMD 8W LED
Lumen: 353LM
Voltage: 220-240V
Color: Black
IP54



● ELED-395

LED EXTERIOR WALL LIGHT



● ELED-395S



● ELED-395W



● GPLED-395
(1m)



● GPLED-395
(0.52m)



HOT
Selling

LED EXTERIOR WALL LIGHT



With Sensor
Detection Range: 160°
Detection Distance: Max 6M
Detection Time: 10sec-7min



Material: ABS+PC
Lamp: 6W(27pcs x SMD2835 4000K LED)
Lumen: 300LM
Color: White/Black/Gray
IP65



● ELED-337

● ELED-337S

HOT
Selling



LED EXTERIOR WALL LIGHT



● EL-1140A

Material: Aluminum-Die Cast + PC
Lamp: Built-in 3W (1x3W) LED + E27 6W LED Bulb (Excl.)
Finish: Black

LED MODERN WALL LAMP



Material: Aluminum Die-casting + PC
Voltage: 220-240V / 50Hz
Color: Black
With Built-in Driver
IP54



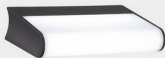
● ELED-121
Lamp: 13W SMD LED



● ELED-122
Lamp: 7.5W SMD LED



● ELED-123
Lamp: 10W SMD LED



HOT
Selling

LED GARDEN WALL/PATH LIGHT



Material: Aluminum Die-Casting + Opal PC
Voltage: 220-240V, 50Hz
Lamp: 6W SMD 2835 LED
Lumen: 630LM
Finish: Black
With Isolated Driver
IP44



● GPLED-125S



● GPLED-125



● ELED-125S



● ELED-125

LED WALL LIGHT



• EL-035



Material: Die Cast ABS Body + Clear Glass Diffuser
Input Voltage: AC220-240V/50-60HZ
Bulb Adaptable: GU10 LED 8W (Excl.)
Color: Black
IP44

MODERN WALL LAMP



Material: Die-casting Aluminum + PC + Glass
Bulb Adaptable: GU10 20W Bulb (Excl.)
Input Voltage: 100-240V
Finish: Black
IP44



• EL-112

LED WALL LIGHT



Delivered Lumens: 430
Watts: 9W
Voltage: 120V/100-240V
Mounting Options: Wall
CCT: 3000K
CRI: 80+
IP65



● ELED-504

LED COVER WALL LIGHT



Delivered Lumens: 800
Watts: 13W
Voltage: 120V/100-240V
Mounting Options: Wall
CCT: 3000K
CRI: 80+
IP65



● ELED-640



● ELED-640S



LED COVER WALL LIGHT



Declared Lumens: 800
Watts: 13W
Voltage: 20W/100-240V
Mounting Options: Wall
CCT: 3000K
CRI: 80+
IP65



● ELED-641

LED MODERN WALL LAMP



● ELED-124



● ELED-124S



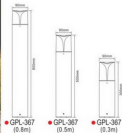
Material: Aluminum Die-Casting + Opal PC
Voltage: 220-240V, 50Hz
Lamp: 6W SMD 2835 LED
Lumen: 380LM
Finish: Black
With Isolated Driver
IP44



ENERGY SAVING WALL/PATH LIGHT



Material: Die-casting Aluminum + PC
Bulb Adaptable: E27 18W Bulb (Excl)
Input Voltage: 100-240V
Finish: Black
IP44



LED GARDEN WALL/PATH LIGHT



Material: Aluminum Body + PC & Glass Diffuser
Voltage: 100V - 240V
Color Temperature: 2700K - 6400K
Finish: Granulated Matt Black
IP44

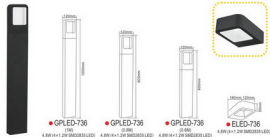


LED GARDEN WALL/PATH LIGHT

Glare-Free

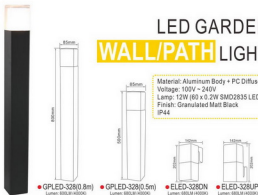


Material: Alu. Body + PC Diffuser
Lumen: 350LM (4000K)
Color Temperature: 2700K - 6500K
Finish: Granulated Matt Black / Grey / White
CRI: Ra>80
IP54



LED GARDEN WALL/PATH LIGHT

Material: Aluminum Body + PC Diffuser
Voltage: 100V - 240V
Lamp: 12W (60 x 0.2W SMD2835 LED)
Finish: Granulated Matt Black
IP44



Material: Aluminum Body + Glass Diffuser
Voltage: 100V - 240V
Lamp: 9W (45pcs x 0.2W SMD2835 LED)
Lumen: 695LM (4000K)
Finish: Black
IP54



ENERGY SAVING WALL/PATH LIGHT

Material: Stainless Steel + PC
 Voltage: 220-240V
 Lamp Adaptable: E27 Max 40W A60 Bulb (Excl.)
 or 23W ESB Spiral (Excl.)
 Finish: Stainless Steel
 IP44



● EL-762



● GPL-762
(0.496)



● GPL-762
(0.390)



● GPL-857
(0.890)



● GPL-857
(0.530)



● GPL-857
(0.330)



● WG-857



Material: Aluminum + PC Diffuser
 Bulb Adaptable: E27 6W LED Bulb (Excl.)
 Input Voltage: 220-240V
 Finish: Gray/Dark Gray/Black
 IP54

LED GARDEN WALL/PATH LIGHT

Material: Stainless Steel + Clear PC
 Finish: Stainless Steel
 Lamp: 6W(30 x 0.2W LED)
 Input Voltage: 100-240V
 IP44



● GPLED-757
(1M)



● GPLED-757
(0.3M)



● ELED-757A



● ELED-156



Material: Aluminum + PC
 Lamp: 5.4W(90 x 0.08W LED)
 Lumen: 2700K 585LM
 Finish: Dark Gray/Black
 IP54



● GPLED-156



● GPLED-162



● ELED-162



STEEL GARDEN WALL/PATH LIGHT

Material: Iron + Clear PC Shade

Bulb Adaptable: E27 10W LED Bulb A Type (Excl.)

Finish: Matt Black

IP44



● EL-SS05UP



● EL-SS05UPS



WIFI Sensor
Detection Range: 12M Max. ± 120°
Adjustable Sensor Timing:
From 5 Seconds to 8 Minutes



(Available in 1100 & 0.25)



● GPL-SS05

STAINLESS STEEL GARDEN WALL/PATH LIGHT

Material: Brushed Stainless Steel + Clear PC Shade

Bulb Adaptable: E27 10W LED Bulb A Type (Excl.)

Finish: Stainless Steel

IP44



● EL-SS05UP-SS



● EL-SS05UPS-SS



WIFI Sensor
Detection Range: 12M Max. ± 120°
Adjustable Sensor Timing:
From 5 Seconds to 8 Minutes



(Available in 1100 & 0.25)



● GPL-SS05-SS

STAINLESS STEEL GARDEN WALL/PATH LIGHT

Material: Stainless Steel + PC Diffuser

Bulb Adaptable: E27 10W LED Bulb A Type (Excl.)

Finish: Stainless Steel

IP44



● GPL-SS01/UP



● GPL-SS01/W



● GPL-SS01

ALUMINUM GARDEN WALL LIGHT

Material: Die Cast Aluminum + PC

Bulb Adaptable: E27 10W LED Bulb A Type (Excl.)

Finish: Black

IP44



● GPL-01
(110)



● GPL-01
(3.75M)



● GPL-01
(0.5M)

GARDEN WALL/PATH LIGHT

Material: Stainless Steel + Glass

Bulb Adaptable: E27 10W LED Bulb A Type (Excl.)
IP44



● EL-555UPS
Sensor Range: 15M x 110°



● EL-555UP



● EL-555DN

● EL-555PE2



Material: Iron + Glass

Bulb Adaptable: E27 10W LED Bulb A Type (Excl.)
Finish: Galvanized Iron/White/Black
IP44



● EL-555UP



● EL-555HG



● EL-555DN1



● EL-555UPS
Sensor Range: 10M x 110°



● EL-555PE2



WATER-PROOF SPOT WALL LIGHT

Material: Stainless Steel + Glass

Finish: Stainless steel
Bulb Exclusive
IP44



● EL-426DN
GU10 5W LED Bulb



● EL-426DNS
GU10 5W LED Bulb
With Sensor
Sensor Range: 8M x 120°



● EL-426DN-2
2 x GU10 5W LED Bulb



● EL-426DNS-2
2 x GU10 5W LED Bulb
With Sensor
Sensor Range: 8M x 120°



● EL-413
Bulb Adaptable: 2 x GU10 5W LED Bulb

● ELED-413
Lamp: 3W (1 x 3W LED)
Lumen: 303LM (4000K)



● EL-413-2
Bulb Adaptable: 2 x GU10 5W LED Bulb

● ELED-413-2
Lamp: 3W (2 x 3W LED)
Lumen: 2 x 303LM (4000K)

Material: Aluminum Die-Casting Body + PC Diffuser

Voltage: 220V - 240V
Color Temperature: 2700K - 6500K
Finish: Black / Aluminum Die-Cast
Bulb Exclusive
Ra > 70
IP54

ALUMINUM WALL LAMP

Material: Aluminum Die-cast
Finish: Polished
Bulb Exclusive
IP44



● EL-420W-1
Ø80x50 LED 80W



● EL-420W-2
Ø80x100 LED 80W

Material: Aluminum + PC
Lamp: 10W (20 x 0.5W LED)
Finish: Dark Gray / Gray
Input Voltage: 220~240V
IP44
Ra:>80



● ELED-173
Without Sensor



● ELED-173S
With Sensor

Dimension Range: 107~160 mm
Sensor Type: 10 x 2.5mm - 4 x 1.7mm (adjustable)

LED LIGHT-DOOR PLATE LIGHT

Glare-Free



Material: Alu. Body + PC Diffuser
Lamp: 7.2W (6x1.2W SMD2835 LED)
Lumen: 420LM (4000K)
Color Temperature: 2700K - 6500K
Finish: Granulated Matt Black / Grey / White
CRI: Ra>80
IP54



● ELED-729DP



● ELED-729DPA
Doorplate Numbers 1-9 Incl.

LED EXTERIOR RECESSED WALL LIGHT



Material: Die-Cast Aluminum + PC
 Lamp: 3W (3 × 0.5W LED)
 LED Brand: CREE KTE
 Color Temperature: 3000K-6000K
 Lumen: 110LM
 Color: Black
 With Waterproof Driver
 IP65



● ELED-149B ● ELED-149A



Material: Aluminum
 Voltage: 220-240V
 Lamp: 3W (1pc × 3W CREE LED)
 Lumen: 160LM
 Finish: Stainless Steel
 IP54



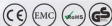
Material: Die-Cast Aluminum + Plastic
 Voltage: AC100-240V
 Lamp: 2W (11pcs × 2W Everlight 2835 LED)
 Color Temperature: 3000K
 Color: Silver
 IP65



Material: Die-Cast Aluminum + Plastic
 Voltage: AC100-240V
 Lamp: 2W (11pcs × 2W Everlight 2835 LED)
 Color Temperature: 3000K
 With 15cm cable
 Color: Silver
 IP65



MODERN LANTERN



Material: Aluminum Die Cast Body + PC Diffuser
Voltage: AC220V-240V
Finish: Black
IP44



- EL-467DN
E27 10W LED Bulb
- ELED-467DN
10W/1Apex x 1W SMD2835 LED
S90LM4000K



- EL-467UP
E27 10W LED Bulb
- ELED-467UP
10W/1Apex x 1W SMD2835 LED
S90LM4000K



- GPL-467
E27 10W LED Bulb
- GPL-467
10W/1Apex x 1W SMD2835 LED
S90LM4000K



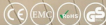
- EL-467HG
E27 10W LED Bulb
- ELED-467HG
10W/1Apex x 1W SMD2835 LED
S90LM4000K



- EL-467P2
E27 10W LED Bulb
- ELED-467P2
10W/1Apex x 1W SMD2835 LED
S90LM4000K



- GPL-467PE3
E27 10W LED Bulb
- GPL-467PE3
10W/1Apex x 1W SMD2835 LED
S90LM4000K



Material: Aluminum Die Cast Body
+ PC Diffuser
Voltage: AC220V-240V
Finish: Black
IP44



- EL-468DN
E27 10W LED Bulb
- ELED-468DN
10W/1Apex x 1W SMD2835 LED
S90LM4000K



- EL-468UP
E27 10W LED Bulb
- ELED-468UP
10W/1Apex x 1W SMD2835 LED
S90LM4000K



- EL-468HG
E27 10W LED Bulb
- GPL-468
E27 10W LED Bulb
- GPL-468
10W/1Apex x 1W SMD2835 LED
S90LM4000K



- EL-468P2
E27 10W LED Bulb
- ELED-468P2
10W/1Apex x 1W SMD2835 LED
S90LM4000K



- EL-468HG
E27 10W LED Bulb
- ELED-468HG
10W/1Apex x 1W SMD2835 LED
S90LM4000K



- GPL-468
E27 10W LED Bulb
- GPL-468
10W/1Apex x 1W SMD2835 LED
S90LM4000K

LED MODERN LANTERN



Material: Aluminum-Die Cast + PC
Lamp: 8W SMD LED
Lumen: 640LM
Ra>80
Color: Black
IP54



● GPLED-469



● ELED-469ON



● ELED-469UPS



● ELED-469P2

LED MODERN LANTERN

Material: Aluminum Die-Casting Body + PC Diffuser
Voltage: 220V ~ 240V
Color Temperature: 2700K ~ 6500K
Lamp: 7W (14pcs x 0.5W SMD2835 LED)
Lumen: 360LM (4000K)
Ra > 70
Finish: Black / White
IP54



● GPLED-459



● ELED-459HG



● ELED-459P2



● ELED-459UP



● ELED-459ON



• EL-126



• GPL-126



ENERGY SAVING WALL/PATH LIGHT



Material: Aluminum + Iron + PC
Voltage: 110-240V, 50Hz
Color: Black
Without E27 60W Bulb (Excl.)
IP54



• EL-640UP



• EL-640DN



• EL-640PE2



• EL-640P1



• EL-640P2

Material: Die Cast Aluminum + Glass
Bulb Adaptable: E27 10W LED Bulb A Type Q
Finish: White/Black/Matt Rust/Black Gold/Verdi Green
IP44



• EL-560HG



• EL-560UPS



• EL-560UP



• EL-560DN



• EL-560P1



• EL-560P2



• EL-560PE3

ALUMINUM LANTERN

Material: Die Cast Aluminum + Glass
Bulb Adaptable: E27 10W LED Bulb Q
Finish: Black / White / Black Gold / Verdi Green
IP44

ALUMINUM LANTERN

Material: Die Cast Aluminum + Frosted Glass
Bulb Adaptable: E27 10W LED Bulb
Finish: Black



● EL-252UP
IP44

- EL-252UP
- EL-252DN
- EL-252HG
- EL-252P2

Product size: 24 x 20 x 44cm

Product size: 24 x 20 x 44cm

Product size: 20 x 18 x 20cm

Product size: 20 x 18 x 41cm



● EL-253DN
IP23

- EL-253UP
- EL-253DN
- EL-253HG
- EL-253P1

Product size: 23 x 18 x 29cm

Product size: 23 x 18 x 29cm

Product size: 18 x 18 x 26cm

Product size: 18 x 18 x 26cm



● EL-254DN
IP23

- EL-254UP
- EL-254DN
- EL-254HG
- EL-254P2

Product size: 24 x 18 x 27cm

Product size: 24 x 18 x 27cm

Product size: 18 x 18 x 27cm

Product size: 18 x 18 x 38cm

LANTERN IN PC

Material: PC Frame + PC Clear/Milky White Shade
Bulb Adaptable: E27 LED 6W
Finish: Black/White



● EL-P180APE2



● EL-P180AHG



● EL-P180AP2



● EL-P180AUP



● EL-P180ADN



● EL-P260AUP



● EL-P260AHG



● EL-P260ADN



● EL-P260AP2



● EL-P260APE2



ALUMINUM LANTERN

Material: Die Cast Aluminum + Glass
Bulb Adaptable: E27 10W LED Bulb A Type
Finish: Black/White/Verd/ Green/
Black Gold/Matt Rust

IP44



● EL-260HG

● EL-260DN



● EL-260UP

● EL-260UPS
Sensor Range: 10M x 110'



● EL-260P2

● EL-260P1



● EL-260PE2
Overall H: 18'

ALUMINUM LANTERN

Material: Aluminum Die-Cast Body + Glass Shade
Bulb Adaptable: G45 6W LED Bulb
Finish: Black / White



● EL-655HG



● EL-655DN



● EL-655LP



● EL-655PE2



● EL-655P1



● EL-655UPS

LANTERN

IN PC

Material: PC(PP)

Bulb Adaptable: E27 10W LED Bulb A Type

Finish: White/Black

IP44



LANTERN

IN PP

Material: PP Body + Glass Clear Shade

Bulb Adaptable: E27 LED 6W

Finish: White / Black Body

IP44



LANTERN IN PLASTIC

Material: PC(PP)
Bulb Adaptable: E27 10W LED Bulb A Type Q
Finish: White/Black
IP44



● EL-P490DN



● EL-P490P2



● EL-P490HG



● EL-P490UP



● EL-341HG
P2



● EL-341DN
P2



● EL-341P2
P4

ALUMINUM LANTERN

Material: Die Cast Aluminum + Frosted PC
Bulb Adaptable: E27 10W LED Bulb A Type Q
Finish: White/Black/Matt Rust



● EL-341PE2
P4

METAL LANTERN



• EL-991DN

Material: Iron + Clear Glass
Bulb Adaptable: E27 10W LED Bulb A Type Q
Finish: Black/White/Galvanized
IP44



Material: Iron + Bubble Glass
Bulb Adaptable: E27 10W LED Bulb A Type Q
Finish: Red Antique Brass / Black
IP23



• EL-199DN



GARDEN LIGHT

NEW
Products



BATTERY OPERATED GARDEN SPIKE



Material: ABS + PC-PP
Output Lumen: 200LM
Dimensions for wet location: $\Phi 3.94'' \times H16.9''$
Power: 3C Batteries (excl.)
Sensor: PIR + photocell



• GLED-182BOS



2-in-1 Battery Operated WALL/SPIKE LED LIGHT (with Sensor)

Material: Plastic
Power: 2W
Lamp: 1pc COB
Lumen: 100LM
Battery: 4AA (not included)
Color: White/Black
Mode: OFF/Eco
(Sensor with 50% output)/High
(Sensor with 100% output)
IPX5



Function 1
Wall light



Accessories



Function 2
LED Spike



• GLED-175BOS



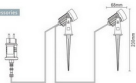
LED GARDEN SPIKE 2 pcs/pack

Material: Aluminum + PC
Lamp: 3W 3000K LED / each
Lumen: 85LM / each
Cable: AWM 2464 24AWG VW-1 /
transformer to light: 4M /
light to light: 2M
Output: 6V 1000MA
Input: 100-240V 50/60Hz
Color: Black
IP44



● GLED-807SP-S2

Accessories



GARDEN SPOT LIGHT ENERGY SAVING



Material: PP
Bulb Adaptable: E27 230v 100W Max. Par38 Bulb (Excl.)
With 1.5m 2G1.5mm2 Rubber Cable + VDE Plug
Color: Black
IP44



● PG-11A ● PG-22A

LED GARDEN SPOT LIGHT



Set of 2
Lumen: 2 x 125LM (4000K)
Each Fitting with 1M SPT-2W (18awg) /
H05RN-F 2 x 0.75mm² Cable
Each set with 4M SPT-2W (18awg) /
H05RN-F 2 x 0.75mm² Extension Cable
With Outdoor Driver
IP44



● **GLED-320SP-S2(Junio)**
Material: Die Cast Aluminum + Glass
Per Head with 3W High-Power LED
Finish: Black/White/Silver



● **GLED-862SP-S2(Vesta)**
Material: Zinc Alloy + Aluminum + Glass
Per Head with 1 x 3W High-Power LED
Finish: Black/White



● **GLED-863SP-S2(Nox)**
Material: Zinc Alloy + Aluminum + Glass
Per Head with 1 x 3W High-Power LED
Finish: Black/White



2 in 1 LED UNDER WATER SPOT LIGHT

Premium
Material: Solid Alu. Body
Lamp: 1W&3W LED (6000K/Cool White)
Finish: Aluminum Anodize
IP68



● **GLED-368A/SP**

1W 8000K 80LM Built-in Driver	3W 8000K 220LM Built-in Driver
--	---

Option 1
● **GLED-368A**
2.5M HO5RN-F Cable
PW USB Plug



Option 2
● **GLED-368P**
2.5M HO5RN-F Cable
PW USB Plug



Option 2
● **GLED-311SP**
2.5M HO5RN-F Cable



Option 1
● **GLED-311BA**
2.5M HO5RN-F Cable



● **GLED-311BA/SP**
3 x 1W + 3W
8000K, 210LM
Built-in Driver



ENERGY SAVING

ALUMINUM SPOT LIGHT

Material: Brushed Aluminum Alloy + Glass Shade
IP44

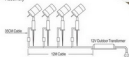


• GL-860SP
MR16 5W LED Bulb



• EL-860DN
GU10 5W LED Bulb

• Assembly

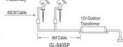


Material: Die Cast Aluminum + Glass Lens
Bulb Adaptable: MR16 5W LED Bulb
Finish: Aluminum
IP44



• GL-840SP

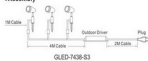
• Assembly



GARDEN

SPOT LIGHT

• Assembly



GLED-7438-S3

Set of 3

Material: Aluminum + Glass
Per Head with 1x3w High Power Led
Lumen: 3 x 270LM (4000K)
Each Fitting with 1M SPT-2W (18awg)
H05RN-F 2x0.75mm² Cable + 01 Plug
Each Set with 4M SPT-2W (18awg)
H05RN-F 2x0.75mm² Cable
+ Water-proof Female Plug + 01 Plug
With Outdoor Driver
Finish: Aluminum / Black
IP44



• GLED-7438



Material: Die Cast Aluminum Body + Glass
Bulb Adaptable: GU10 5W LED Bulb
Finish: Matt Black / Alu.
IP44



• WG-851

Material: Die Cast Aluminum Body + Glass Diffuser
+ Plastic Spike
Bulb Adaptable: GU10 5W LED Bulb
With 1M H05RN-F 3x1.0mm² Cable + Connection Box
IP44



• GL-7438

LED SPOT LIGHT

Material: Die-cast Aluminum
Bulb Adaptable: CO-10 50W LED Bulb (E26, T2)
IP64



● GL-810SP



● GL-830SP

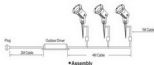


● GL-820SP



● GL-850SP

LED GARDEN LIGHT

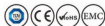


Set of 3
Material: Aluminum Die-Cast + Glass
Lamp: Per head with 1 x 3W COB LED
Color Temperature: 2700-6500K
Lumen: 3 x 100LM (4000K)
Each Fitting with 1M SPT-2W (18awg)
1M H05RN-F 2 x 0.75mm² Cable + DC Plug
Each Set with 4M SPT-2W (18awg)
4M H05RN-F 2 x 0.75mm² Extension Cable
+ Waterproof Female Plug + DC Plug
With Outdoor Driver
Finish: Black
IP44



● GL-850SP-S3

LED DECK LIGHT SET



Set of 6
Material: Stainless Steel + Tempered Glass
With 5W VDE Driver
RGB type is optional
Finish: Stainless Steel
IP67



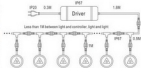
● **DKLED-60-S6**
Lamp: 6 x 0.5W SMD3030 LED (6000K)
Lumen: 7LM (6000K) per Light



● **DKLED-61-S6**
Lamp: 6 x 0.5W SMD3030 LED (6000K)
Lumen: 5LM (6000K) per Light



Super Thin 9mm Thickness



LED DECK LIGHT SET



Set of 6
Material: Stainless Steel + PC
With 5W VDE Driver
Finish: Stainless Steel
IP67



● **DKLED-63-S6**
Lamp: 6 x 0.5W SMD3030 LED (6000K)
Lumen: 9LM (6000K) per Light



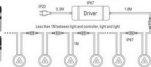
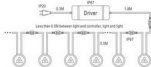
● **DKLED-65-S6**
Lamp: 6 x 0.6W SMD3030 LED (6000K)
Lumen: 40LM (6000K) per Light
RGB type is optional



● **DKLED-64-S6**
Lamp: 6 x 0.4W SMD3030 LED (6000K)
Lumen: 7LM (6000K) per Light



● **DKLED-62-S6**
Lamp: 6 x 0.4W SMD3030 RGB LED
Lumen: 40LM (3000K) per Light
With IR RGB Controller (3M, 302)



LED IN-GARDEN LIGHT

Intertek  

Material: 304 Stainless Steel Cover
+ Die-Casting Aluminum Body + PP Housing
+ Clear Glass Diffuser

Voltage: 220V - 240V

Finish: Stainless Steel Natural Color for Cover + Black Color for Housing
IP67



● GLED-147

● GLED-SS139

● GLED-139A

●	Lamp	Lumen	Product size
GLED-147	3W (2 x 1W LED)	270LM (2000K)	Dia. 42mm x 55mm
GLED-SS139	3W (2 x 1W LED)	270LM (2000K)	Dia. 55mm x 15.5mm
GLED-139A	3W (2 x 1W LED)	270LM (2000K)	Dia. 55mm x 15.5mm
GLED-4139	3W (2 x 1W LED)	720LM (2000K)	Dia. 55mm x 15.5mm
GLED-4139	10W (2 x 5W LED)	860LM (2000K)	Dia. 57mm x 15.5mm
GLED-4139	10W (2 x 5W LED)	1050LM (2000K)	Dia. 57mm x 15.5mm
GLED-139-5	3W (2 x 1W LED)	405LM (2000K)	Dia. 70.2mm x 15.5mm
GLED-139-4	3W (2 x 1W LED)	405LM (2000K)	Dia. 70.2mm x 15.5mm
GLED-139-6	3W (2 x 1W LED)	720LM (2000K)	Dia. 70.2mm x 15.5mm



● GLED-139-5



AC Type 2-in-1 LED In-Ground Light & Deck Light

4-in-1 version is optional

Material: Aluminum
Lamp: 2.4W (8 x 0.3W SMD2835 LED)
Lumen: 135LM (4000K)
With 1M 2x0.75mm² H05RN-F Cable
Finish: Silver / Black
IP67



● GLED-148

(1) In-Ground Light



(2) Decking Light



With Red, Green, Blue Color Filters



PARTY LIGHT

ALUMINUM BULKHEADS STEP LIGHT

Material: Die Cast Aluminum
Bulb Adaptable: E27 5W LED Bulb G45 Type
Finish: Black/White
IP44



● RL-20A

100mm | 230mm | 77mm

● RL-20C

100mm | 230mm | 77mm

● RL-20B

100mm | 230mm | 77mm



Material: Plastic
10pcs LED G45 Bulb
Transparent Lampshade
With 5M PVC Cable(black)
With 3.5V 3.6W IP44 Transformer + Waterproof Plug
Color: Transparent



•KLED-01



Material: Plastic
10pcs LED G50 Bulb
E40 lamp holder
colorful lampshade
With 3M PVC Cable (black)
With 24V 3.6W IP44 Transformer + Waterproof Plug
Color: Colorful



•KLED-02



FLOODLIGHT WORK LIGHT

FULL SCREEN FLOOD LIGHT

NEW
Products

Omni-Directional Adjustable

Material: C4 Glass/Airproof Housing + PC
 Wafer: 10W, 20W, 30W, 50W, 80W (+10%)
 Sensor: 100° sensor (pc, 7000-8M) (+24 degree)
 Beam: 100° beam (1054mm x 347mm) 2000
 1000W light: 410-2000Lm
 Color: White, Black
 Efficiency: 80%
 PFS: IP44

Design
Patented

Utility
Patented



Angle Adjustable Heads & Sensor

The LED Flood light can be adjusted to the angle you want. The light can be adjusted.



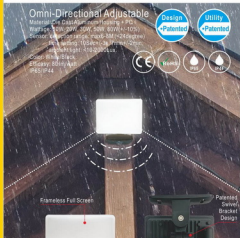
Patented Sensor Bracket Design

The sensor bracket design can be used to adjust the angle of the light.



Quick Connector Design

Quick Connector helps the installation easier and faster.



Frameless Full Screen



Adjustable PIR Sensor



Patented
Sensor
Bracket
Design

Excellent
Heat Sink

Quick Connector

Standard Version

Item NO.	Lamp	Lumen	Product Size
• FLED-7479-10W	10W	800lm	L135xW95xH85mm
• FLED-7479-20W	20W	1600lm	L135xW95xH85mm
• FLED-7479-30W	30W	2500lm	L135xW95xH121mm
• FLED-7479-50W	50W	4300lm	L136xW95xH145mm
• FLED-7479-80W	80W	6000lm	L224xW75xH160mm

Sensor Version

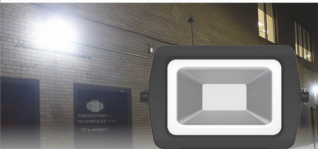
Item NO.	Lamp	Lumen	Product Size
• FLED-7479S-10W	10W	800lm	L135xW95xH121mm
• FLED-7479S-20W	20W	1600lm	L135xW95xH128mm
• FLED-7479S-30W	30W	2500lm	L136xW95xH154mm
• FLED-7479S-50W	50W	4200lm	L136xW95xH179mm
• FLED-7479S-80W	80W	6000lm	L224xW75xH202mm

NEW
Products

SENSOR DETACHABLE LED FLOODLIGHT



SMART CONTROL



about GRAPHENE...

Excellent Heat Dissipation Performance
Chemical Resistance
Surface Hardness

Easily Change Sensor
by Yourself

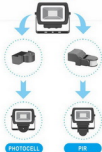


• FLED-597-10W



Material: Graphene + 316 Stainless Steel Bracket
Detachable PIR & PhotoCell Sensor for Optional
Input Voltage: 200-265V 50/60Hz
Finish: Black
IP65

•	Lamp	Lumen	Product size(mm)
FLED-597-10	10W (500mA/200V-265V)	800lm (4000K)	5.17 x 91.78 x 41.8
FLED-597-20	20W (500mA/200V-265V)	1600lm (4000K)	5.13 x 91.77 x 41.8
FLED-597-30	30W (500mA/200V-265V)	2400lm (4000K)	5.15 x 91.22 x 41.8
FLED-597-50	50W (500mA/200V-265V)	4000lm (4000K)	5.17 x 91.23 x 41.8



PHOTOCELL

PIR



Hey Google,
set the flood light
to party mode.

Okay.



• FLED-513W-10

Material: Die Cast Aluminum
Built-in Junction Box
Finish: Black
IP65

•	Lamp	Lumen	Product size(mm)
FLED-513W-10	10W	750LM	L118xW94xD42
FLED-513W-20	20W	1500LM	L126xW94xD42

CCT ADJUSTABLE LED EXTERIOR LIGHT

HOT
Selling

with PIR Sensor

Voltage: 10W~1.10%, Stable watt~9W
Sensor: detection range: max~8M (+240degree)
time setting: 10Sec~1.3s, 7min~1.2min
ambient light: +10~2000lx



CCT Adjustable:
Cool White
Natural White
Warm White



Material: Aluminum body + Glass cover
Color Temp: 3000K/4000K/6000K
With PIR sensor
Color: White/Black
IP65

Item NO.	Lamp	Product Size
● FLED-695S-10W	10W	L113.4xW64.4xH127.3mm
● FLED-695S-20W	20W	L110.6xW64.4xH147.5mm
● FLED-695S-30W	30W	L147.6xW67.3xH166.3mm
● FLED-695S-50W	50W	L186.6xW67.3xH188mm



● FLED-695S-10W



**SUPER SLIM
ONLY 64.4MM**

Item NO.	Lamp	Product Size
● FLED-695-10W	10W	L113.4xW52xH127.3mm
● FLED-695-20W	20W	L130.6xW52xH147.5mm
● FLED-695-30W	30W	L147.6xW56.3xH166.3mm
● FLED-695-50W	50W	L186.6xW56.3xH188mm



● FLED-695-10W

LED FLOOD LIGHT with IC Driver



Material: Aluminum + Glass
Voltage: AC100-240V
Color Temperature: 3000K-6500K
With 15cm 3 x 1.0MM² Rubber Wire
With IC Driver
Color: Black/White
IP65/IP44



FLED-701-10W



FLED-701S-10W

Item NO.	Lamp	Current	Product Size(mm)
● FLED-701-10	10W/100ma SMD2835-LED	800mA	L124 x W64 x H100
● FLED-701-20	20W/200ma SMD2835-LED	1600mA	L120 x W67 x H100
● FLED-701-30	30W/300ma SMD2835-LED	2400mA	L188 x W68 x H100
● FLED-701-50	50W/500ma SMD2835-LED	4000mA	L232 x W67 x H100
● FLED-701-100	100W/1000ma SMD2835-LED	8000mA	L250 x W68 x H100

Item NO.	Lamp	Current	Product Size(mm)
● FLED-701S-10	10W/100ma SMD2835-LED	800mA	L124 x W64 x H101
● FLED-701S-20	20W/200ma SMD2835-LED	1600mA	L120 x W67 x H100
● FLED-701S-30	30W/300ma SMD2835-LED	2400mA	L188 x W68 x H100
● FLED-701S-50	50W/500ma SMD2835-LED	4000mA	L232 x W68 x H100
● FLED-701S-100	100W/1000ma SMD2835-LED	8000mA	L247 x W74 x H100

LED FLOOD LIGHT

with Junction Box

AC Type



Material: Aluminum + Glass
Voltage: AC220-240V
Color Temperature: 3000K-6500K
Color: Black / White
With 15cm 3 × 1.6MM² Rubber Wire
With Junction Box
IP65 / IP44



• FLED-735-20W

	Lamp	Lumen	Product Size(mm)
• FLED-735-10W	10W(14pcs SMD2835 LED)	800LM	L125 × W105 × H234
• FLED-735-20W	20W(28pcs SMD2835 LED)	1600LM	L175 × W116 × H332
• FLED-735-30W	30W(70pcs SMD2835 LED)	2400LM	L213 × W142 × H353
• FLED-735-50W	50W(70pcs SMD2835 LED)	4000LM	L241 × W163 × H373

	Lamp	Lumen	Product Size(mm)
• FLED-735S-10W	10W(14pcs SMD2835 LED)	800LM	L138 × W149 × H294
• FLED-735S-20W	20W(28pcs SMD2835 LED)	1600LM	L175 × W175 × H322
• FLED-735S-30W	30W(70pcs SMD2835 LED)	2400LM	L213 × W203 × H363
• FLED-735S-50W	50W(70pcs SMD2835 LED)	4000LM	L241 × W224 × H373



• FLED-735S-30W

Sensor: 8M; 120°; 8-10Mins

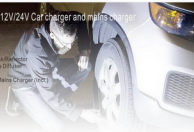
RECHARGEABLE & PORTABLE LED FLOODLIGHT

HOT
Selling

Rechargeable by Li-batteries, 12V/24V Car charger and mains charger



Material: Steel Stand + Aluminum Heat Sink Reflector
+ ABS Housing + Tempered Glass Diffuser
Color Temperature: 2700K - 6500K
Accessories: Batteries, Car Charger and Mains Charger (not)
On/Off Switch
Finish: Black Body + Yellow Stand
IP65



• FLED-556P1-10



On/Off Rocker Switch



DC Hole



	Lamp	Working Time	Charging Time	Rechargeable Batteries	Lumen(3000K)	Product Size
• FLED-556P1-10	10W(3pcs × 1W SMD2835 LED)	3H	2.5H	7.4V 1500mAh	500LM	L145 × W105 × H275mm
• FLED-556P1-20	20W(27pcs × 1W SMD2835 LED)	3H	4H	7.4V 3000mAh	1000LM	L215 × W165 × H375mm

HOT
Selling

SLIM & PORTABLE LED FLOODLIGHT



Material: ABS + Aluminum + Glass
Lamp: COB LED
Input Voltage: AC 85-265V
Battery: 3.7V 2200mAh Rechargeable
19650 Lithium Battery
With Main Charger and Car Charger
Charger Output: DC 4.2V 1000mA
Color: Black + Yellow
IP44



•FLED-651P5-10



Hanging



Foldable



Medium

•	Lamp	Batteries Q'ty & Total Capacity	Lumen(6000K)	Product Size
FLED-651P5-10	10W COB	1pc(3.7V, 2200mAh)	500LM	L114 × W57 × H170mm
FLED-651P5-20	20W COB	2pcs(3.7V, 4400mAh)	1000LM	L160 × W55 × H230mm
FLED-651P5-30	30W COB	4pcs(7.4V, 4400mAh)	1500LM	L225 × W75 × H272mm
FLED-651P5-50	50W COB	8pcs(14.8V, 4400mAh)	2500LM	L225 × W75 × H272mm

Battery Working Time: 2H; Battery Charging Time: 3-4H

BB HOME RESOURCE

www.homeresource.com.tw



Exclusive
for North
Europe

FLUORESCENT WORK LIGHT

Material: Base (ABS) + Ball (PE)
Bulb Adaptable: E27 20W LED Corn Bulb
Voltage: 230V
6M H07RN-F 3G 1.5MM Cable + Plug
IP44



•OS-40PR



•OS-57PR



www.homeresource.com.tw

HOME RESOURCE 89

BULKHEAD



Material: Stainless Steel Cover + PC Body

Lamp: E27 / 10W LED Bulb or 14W Energy Saving Bulb (Excl.)

Finish: Stainless Steel / Silver Grey / Dark Grey / Black

IP44

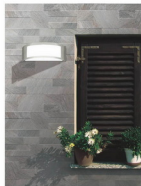
ENERGY SAVING BULKHEAD



● AL-168A



● AL-168B



● AL-168C

LED BULKHEAD

AC Type

Material: ABS Body + PC Diffuser

Voltage: AC 180V - 260V

Color Temperature: 2700K - 6500K

Finish: White / Black

Without Driver

IP54

Spectroradiometric Parameters



• ALED-M573



• ALED-M574

Model	Watt	Lamp	Lumen	Production
ALED-S75	5W	15mm x 1.5W SMD3030 LED	400LM (4000K)	1,175 x 61.75 x 17.5mm
ALED-M575	10W	24mm x 1.5W SMD3030 LED	800LM (4000K)	1,275 x 61.75 x 17.5mm
ALED-S74	5W	15mm x 1.5W SMD3030 LED	400LM (4000K)	1,100 x 61.75 x 17.5mm
ALED-M574	10W	24mm x 1.5W SMD3030 LED	800LM (4000K)	1,200 x 61.75 x 17.5mm



• ALED-M573S



• ALED-M574S



Model	Watt	Lamp	Lumen	Production
ALED-S735	5W	15mm x 0.5W SMD2835 LED	400LM (4000K)	1,175 x 61.75 x 17.5mm
ALED-M5735	10W	24mm x 0.5W SMD2835 LED	800LM (4000K)	1,275 x 61.75 x 17.5mm
ALED-S745	5W	15mm x 0.5W SMD2835 LED	400LM (4000K)	1,100 x 61.75 x 17.5mm
ALED-M5745	10W	24mm x 0.5W SMD2835 LED	800LM (4000K)	1,200 x 61.75 x 17.5mm

Sensor: 120°, 8-10M, 5 Sec+12 Min

LED

BULKHEAD

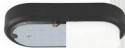
Material: Aluminum Die-Casting Body

+ Opal PC Diffuser

Voltage: 220V - 240V

Finish: Black / White / Grey

IP44



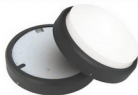
• ALED-S583
Lamp: 7W (60 x SMD2835 LED)
Lumen: 550LM (4000K)



• ALED-S583
Lamp: 10W (90 x SMD2835 LED)
Lumen: 850LM (4000K)



• ALED-S584
Lamp: 7W (40 x SMD2835 LED)
Lumen: 550LM (4000K)



• ALED-S584
Lamp: 10W (60 x SMD2835 LED)
Lumen: 850LM (4000K)

ALUMINUM

BULKHEADS

Material: Die Cast Aluminum + Glass
Finish: White / Black
IP44



- **AL-512** E27 10W LED Bulk A type
205mm | 315mm ---- 130mm |
- **AL-512S** E27 5W LED Bulk G41 type
140mm | 210mm ---- 105mm |

- **AL-514** E27 10W LED Bulk A type
205mm | 315mm ---- 130mm |
- **AL-514S** E27 5W LED Bulk G41 type
140mm | 210mm ---- 105mm |

- **AL-528** E27 10W LED Bulk A type
200mm | 260mm ---- 100mm |
- **AL-520S** E27 5W LED Bulk G41 type
150mm | 190mm ---- 95mm |

- **AL-522** E27 10W LED Bulk A type
260mm | 260mm ---- 110mm |
- **AL-522S** E27 5W LED Bulk G41 type
190mm | 190mm ---- 105mm |

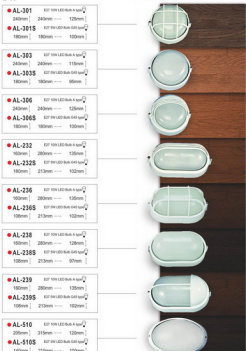
- **AL-524** E27 10W LED Bulk A type
260mm | 260mm ---- 110mm |
- **AL-524S** E27 5W LED Bulk G41 type
190mm | 190mm ---- 105mm |

- **AL-533** E27 10W LED Bulk A type
185mm | 280mm ---- 110mm |

Material: Die Cast Aluminum + Glass
Finish: White / Black
IP44

ALUMINUM

BULKHEADS



- **AL-301** E27 10W LED Bulk A type
240mm | 240mm ---- 125mm |
- **AL-301S** E27 5W LED Bulk G41 type
180mm | 180mm ---- 100mm |

- **AL-303** E27 10W LED Bulk A type
240mm | 240mm ---- 115mm |
- **AL-303S** E27 5W LED Bulk G41 type
180mm | 180mm ---- 95mm |

- **AL-306** E27 10W LED Bulk A type
240mm | 240mm ---- 125mm |
- **AL-306S** E27 5W LED Bulk G41 type
180mm | 180mm ---- 100mm |

- **AL-232** E27 10W LED Bulk A type
160mm | 260mm ---- 135mm |
- **AL-232S** E27 5W LED Bulk G41 type
160mm | 213mm ---- 102mm |

- **AL-236** E27 10W LED Bulk A type
160mm | 260mm ---- 135mm |
- **AL-236S** E27 5W LED Bulk G41 type
160mm | 213mm ---- 102mm |

- **AL-238** E27 10W LED Bulk A type
160mm | 260mm ---- 128mm |
- **AL-238S** E27 5W LED Bulk G41 type
160mm | 213mm ---- 97mm |

- **AL-239** E27 10W LED Bulk A type
160mm | 260mm ---- 135mm |
- **AL-239S** E27 5W LED Bulk G41 type
160mm | 213mm ---- 102mm |

- **AL-510** E27 10W LED Bulk A type
205mm | 315mm ---- 120mm |
- **AL-510S** E27 5W LED Bulk G41 type
140mm | 210mm ---- 100mm |

SECURITY LIGHT

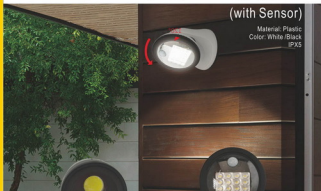
BATTERY OPERATED WALL Security Light

HOT
Selling



(with Sensor)

Material: Plastic
Color: White /Black
IPX5



•ELED-316S

Lamp: 5.5W(1 COB)
Battery: 3 x D-batteries(not included)
Lumen: 350LM
Mode: High(Sensor with 100% output)



•ELED-317S

Lamp: 8W(10SMD)
Battery: 4 x D-batteries(not included)
Lumen: 500LM
Mode: OFF/ON/Eco(Sensor with 50% output)
/High(Sensor with 100% output)



HOT
Selling

BATTERY OPERATED **SECURITY** LIGHT

with Sensor



Material: Abs + ABS + PC
Battery: 3pcs x 1.5V DC AA Battery (Excl.)
PIR Sensor: 8-12m, 143°, 3 secs - 5 mins
Lux Adjustment: 20-10000LX
IP44



Full Screen
ELED-316S

Lamp: 9W (20pcs x SMD3030 LED)
Lumen: Approx. 300LM



Spot-Single Head

ELED-309S-1

Lamp: 1W (3pcs x SMD3030 LED)
Lumen: Approx. 100LM



Spot-Double Heads

ELED-309S

Lamp: 2W (7pcs x SMD3030 LED)
Lumen: Approx. 200LM

BATTERY OPERATED LED **SECURITY** LIGHT

HOT
Selling



Material: ABS Body + PC Diffuser + Aluminum Reflector
Battery: 4 x C Excl.

Sensor: 8M, 100°, 5Secs-7Mins, 20-10000Lux
Color: Black/White
IP44



ELED-304S-2

Lamp: 10W (2 x 5W LED)
Lumen: 450LM (8000K)
Battery Working Time: 5H



PIR



LUX



ELED-303S-2

Lamp: 2W (2 x 1W LED)
Lumen: 150LM (8000K)
Battery Working Time: 12H

WORK LIGHT HIGH BAY GARDEN SOCKET

LED TRI-PROOF LIGHT



Material: Plastic
Voltage: AC170-265V 50-60Hz
Power Factor : PF>0.5
Beam Angle: 120°
Working Temperature: -20~40°C
CRI: Ra>80
Color: White
IP65



	Light	Lumens	Product Size(mm)
EFLD-806-10W	10W (240pin x 0.2W) (SMD2835) LED	750LM	L432 x W28 x H24.5
EFLD-806-15W	15W (240pin x 0.2W) (SMD2835) LED	1125LM	L432 x W28 x H24.5
EFLD-806-20W	20W (240pin x 0.2W) (SMD2835) LED	1500LM	L432 x W28 x H24.5
EFLD-806-30W	30W (240pin x 0.2W) (SMD2835) LED	2250LM	L432 x W28 x H24.5
EFLD-806-40W	40W (240pin x 0.2W) (SMD2835) LED	3000LM	L432 x W28 x H24.5
EFLD-806-45W	45W (240pin x 0.2W) (SMD2835) LED	3375LM	L432 x W28 x H24.5

LED

TRI-PROOF LIGHT



Material: Plastic
 Voltage: AC170-265V
 Color Temperature: 2700K-7000K
 Beam Angle: 120 Degrees
 Power Factor: >0.9
 CRI 70
 With M20 Joint
 With Openable Cap
 Without Aluminum Heat Dissipation Plate
 Color: White
 IP65

	Lamp	Lumen	Product Size(mm)
● EFLD-S607-20W	20W (240mA + 840/200V/1.22)	1650LM	1248 × 96D × 96H
● EFLD-S607-40W	40W (140mA + 840/200V/1.22)	3300LM	1248 × 96D × 96H

● EFLD-S607-20W

LED

TRI-PROOF LIGHT



Material: PC Housing
 Voltage: 85V ~ 265V
 Color Temperature: 3000K ~ 6000K
 Finish: White
 IP65



● EFLD-400

	Lamp	Lumen	Product size
● EFLD-400(10W)	10W (240mA + 840/200V/1.22)	1710LM(4000K)	1,100 x 96 x 96mm
● EFLD-400(20W)	20W (140mA + 840/200V/1.22)	3420LM(4000K)	1,100 x 96 x 96mm
● EFLD-400(40W)	40W (140mA + 840/200V/1.22)	6720LM(4000K)	1,100 x 96 x 96mm

Material: PC Housing + Aluminum
 Voltage: 85V ~ 265V
 Color Temperature: 3000K ~ 6000K
 Color: White
 IP65



● EFLD-800-18W

	Lamp	Lumen	Product size
● EFLD-800(10W)	10W (240mA + 840/200V/1.22)	1650LM(4000K)	1,248 x 96 x 96mm
● EFLD-800(20W)	20W (140mA + 840/200V/1.22)	3300LM(4000K)	1,248 x 96 x 96mm
● EFLD-800(40W)	40W (140mA + 840/200V/1.22)	6600LM(4000K)	1,248 x 96 x 96mm
● EFLD-800(30W)	30W (240mA + 840/200V/1.22)	2850LM(4000K)	1,248 x 96 x 96mm
● EFLD-800(60W)	60W (240mA + 840/200V/1.22)	5700LM(4000K)	1,248 x 96 x 96mm
● EFLD-800(70W)	70W (240mA + 840/200V/1.22)	6600LM(4000K)	1,248 x 96 x 96mm



● HBLED-28-200 with Beamless IP Reflector

● HBLED-28DM-150

● HBLED-28-200

● HBLED-28-150

● HBLED-28-100

● HBLED-28-60

LED HIGH BAY LIGHT-UFO

Material: Aluminum Body & Reflector + PC Diffuser

Voltage: 90V - 305V

Finish: Black Body + Natural Alu. Reflector

Meanwell Driver

Beam Angle: 125°

IP65

Model	Temp	Color
HBLED-28-60	4000K + Plug 5000000LED	7000K(ACTIVE) - 5000K
HBLED-28-100	10000K + Plug 5000000LED	7000K(ACTIVE) - 5000K
HBLED-28-150	10000K + Plug 5000000LED	7000K(ACTIVE) - 5000K
HBLED-28-200	50000K + Plug 5000000LED	7000K(ACTIVE) - 5000K
HBLED-28DM-150	10000K + Plug 5000000LED	7000K(ACTIVE) - 5000K

Optional Reflector



Beam Angle 60°



Beam Angle 90°



Beam Angle 120°

GARDEN OUTLET SOCKET



Material: Resin

Voltage: 230V

Rated Current: 16A

With 1.5M H07RN-F3G1.5mm² Cable + VDE Plug

Finish: Stone / Wood / White

IP44



● YG-311-2
With 2 Sockets



● YG-311TM-2
With 2 Sockets + 1 Mechanical Timer



● YG-S243-4
With 4 Sockets



● YG-S243TM-2
With 2 Sockets + 1 Mechanical Timer



● YG-247-2
With 4 Sockets



French Socket



German Socket



HOME RESOURCE IND. CO., LTD.

Home Resource LEDS The World

The 33rd Home Resource Prize Golf Invitation Tournament
to be held at Aglie Golf & Country Club, Zhongshan, China

EXPECT YOUR PARTICIPATION



Home Resource Golf Team
Welcome your participation for a friendly golf competition



Please contact us: hr@homerresource.com.tw